

## 3 T820 VCO PCB

This section contains the following information.

<b>IPN</b>	<b>Section</b>	<b>Page</b>
<b>220-01180-00</b>	Parts List	3.2
	Mechanical & Miscellaneous Parts	3.3
	PCB Layout - Bottom Side	3.5
	PCB Layout - Top Side	3.6
	Circuit Diagram	3.7

## T820 VCO PCB Parts List (IPN 220-01180-00)

### How To Use This Parts List

The components listed in this parts list are divided into two main types: those with a circuit reference (e.g. C2, D1, R121, etc) and those without (miscellaneous and mechanical).

Those with a circuit reference are grouped in alphabetical order and then in numerical order within each group. Each component entry comprises three or four columns: the circuit reference, variant (if applicable), IPN and description. An entry in the variant column indicates that this is a variant component which is fitted only to the T825 (RX) or T826/827 (TX).

The miscellaneous and mechanical section lists the variant and common parts in IPN order.

### Parts List Amendments

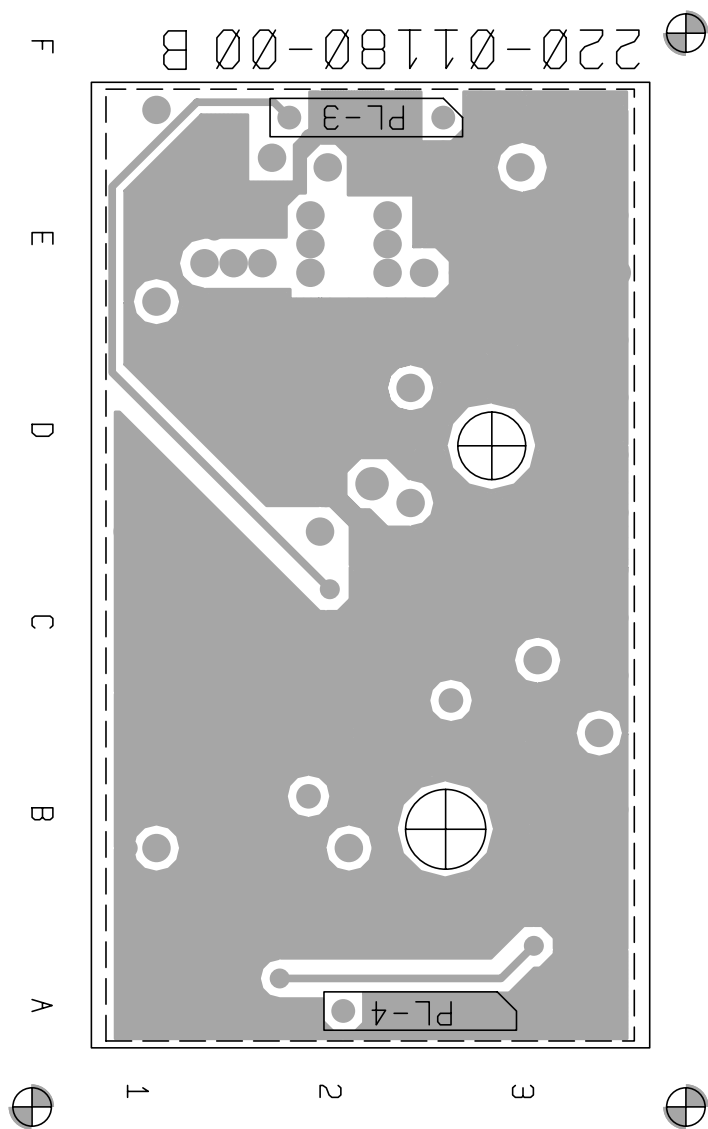
There were no amendments to the parts list at the time of publication.

Ref	Var	IPN	Description	Ref	Var	IPN	Description
C1		015-24100-08	CAP CER 0805 CHIP 1N 10% X7R 50V	R6		036-14100-00	RES M/F 0805 CHIP 1K 5%
&C2	RX	015-22470-01	CAP CER 0805 CHIP 47P 5% NPO 50V	R7		036-12220-00	RES M/F 0805 CHIP 22E 5%
C2	TX	015-22820-01	CAP CER 0805 CHIP 82P 5% NPO 50V	R8		036-12220-00	RES M/F 0805 CHIP 22E 5%
&C3	RX	015-22150-01	CAP CER 0805 CHIP 15P 5% NPO 50V	R9		036-13180-00	RES M/F 0805 CHIP 180E 5%
C3	TX	015-21680-01	CAP CER 0805 CHIP 6P8 +/-0.25P NPO 50V	R10		036-12100-00	RES M/F 0805 CHIP 10E 5%
&C4	RX	015-22220-01	CAP CER 0805 CHIP 22P 5% NPO 50V	R11		036-12560-00	RES M/F 0805 CHIP 56E 5%
C4	TX	015-22100-01	CAP CER 0805 CHIP 10P +/-0.5P NPO 50V	R12		036-13270-00	RES M/F 0805 CHIP 270E 5%
C5		015-24100-08	CAP CER 0805 CHIP 1N 10% X7R 50V	R13		036-12180-00	RES M/F 0805 CHIP 18E 5%
C6		015-24100-08	CAP CER 0805 CHIP 1N 10% X7R 50V	R14		036-13270-00	RES M/F 0805 CHIP 270E 5%
C8		015-24100-08	CAP CER 0805 CHIP 1N 10% X7R 50V	R15		036-14680-00	RES M/F 0805 CHIP 6K8 5%
C9		015-24100-08	CAP CER 0805 CHIP 1N 10% X7R 50V	R16		036-14220-00	RES M/F 0805 CHIP 2K2 5%
C10		015-21220-01	CAP CER 0805 CHIP 2P2 +/-0.25P NPO 50V	R17		036-14100-00	RES M/F 0805 CHIP 1K 5%
C11		015-24100-08	CAP CER 0805 CHIP 1N 10% X7R 50V	R18		036-12100-00	RES M/F 0805 CHIP 10E 5%
C12		015-24100-08	CAP CER 0805 CHIP 1N 10% X7R 50V	R19		036-12180-00	RES M/F 0805 CHIP 18E 5%
C13		015-22560-01	CAP CER 0805 CHIP 56P 5% NPO 50V	R20		036-13330-00	RES M/F 0805 CHIP 330E 5%
C14		015-23150-01	CAP CER 0805 CHIP 150P 5% NPO 50V	R21		036-12560-00	RES M/F 0805 CHIP 56E 5%
C15		015-23220-01	CAP CER 0805 CHIP 220P 5% NPO 50V	R22		036-13680-00	RES M/F 0805 CHIP 680E 5%
C16		015-24100-08	CAP CER 0805 CHIP 1N 10% X7R 50V	R23		036-12560-00	RES M/F 0805 CHIP 56E 5%
C17		015-05470-08	CAP CER 1206 CHIP 47N 10% X7R 50V				
C18		015-24100-08	CAP CER 0805 CHIP 1N 10% X7R 50V	VC1		028-02400-02	CAP TRIM 5/40P CER 5MM KV40001
C19		015-24100-08	CAP CER 0805 CHIP 1N 10% X7R 50V				
C20		015-24100-08	CAP CER 0805 CHIP 1N 10% X7R 50V				
C21		015-22330-01	CAP CER 0805 CHIP 33P 5% NPO 50V				
C22		015-22470-01	CAP CER 0805 CHIP 47P 5% NPO 50V				
C23		015-24100-08	CAP CER 0805 CHIP 1N 10% X7R 50V				
C24		025-08100-02	CAP TANT BEAD 10M 10% 16V				
C25		015-22270-01	CAP CER 0805 CHIP 27P 5% NPO 50V				
&C26	RX	015-22560-01	CAP CER 0805 CHIP 56P 5% NPO 50V				
C26	TX	015-22390-01	CAP CER 0805 CHIP 39P 5% NPO 50V				
D1		001-00012-63	(S) DIODE VARICAP BB809				
D2		001-00012-63	(S) DIODE VARICAP BB809				
D3		001-00012-63	(S) DIODE VARICAP BB809				
D4		001-00012-63	(S) DIODE VARICAP BB809				
D5		001-00012-63	(S) DIODE VARICAP BB809				
D6		001-00012-63	(S) DIODE VARICAP BB809				
L1		056-00021-56	IND FXD 3.3UH AXIAL 10X4.2MM PHENOLIC				
L2		056-00021-56	IND FXD 3.3UH AXIAL 10X4.2MM PHENOLIC				
&L3	RX	055-01006-00	COIL TOROID 211NH 22P 15T T820 RX				
L3	TX	055-01005-00	COIL TOROID 280NH 22P 18T T820 TX				
L4		056-00021-56	IND FXD 3.3UH AXIAL 10X4.2MM PHENOLIC				
L5		052-08140-45	COIL A/W 4.5T/4.0MM HOR 0.8MM WIRE				
L6		057-00047-00	IND FXD SMD 47NH 20% MUR LQN2A				
L7		056-00021-56	IND FXD 3.3UH AXIAL 10X4.2MM PHENOLIC				
L8		057-00100-02	IND FXD SMD 100NH 10% MLF3216DR 1206 CHIP				
L9		056-00021-56	IND FXD 3.3UH AXIAL 10X4.2MM PHENOLIC				
Q1		000-10003-10	(S) XSTR SMD MMBFJ310 JFET SOT-23 UHF				
Q2		000-10057-10	(S) XSTR SMD MMBR571 NPN SOT-23 UHF LO PW				
Q3		000-10057-10	(S) XSTR SMD MMBR571 NPN SOT-23 UHF LO PW				
Q4		000-10008-57	(S) XSTR SMD BCW70 PNP SOT23 AF SML SIG				
Q5		000-00032-47	(S) XSTR MRF559 NPN XPACK UHF PWR 0.5W				
R1		036-12220-00	RES M/F 0805 CHIP 22E 5%				
R2		036-12560-00	RES M/F 0805 CHIP 56E 5%				
R3		036-13560-00	RES M/F 0805 CHIP 560E 5%				
R4		036-14270-00	RES M/F 0805 CHIP 2K7 5%				
R5		036-14100-00	RES M/F 0805 CHIP 1K 5%				

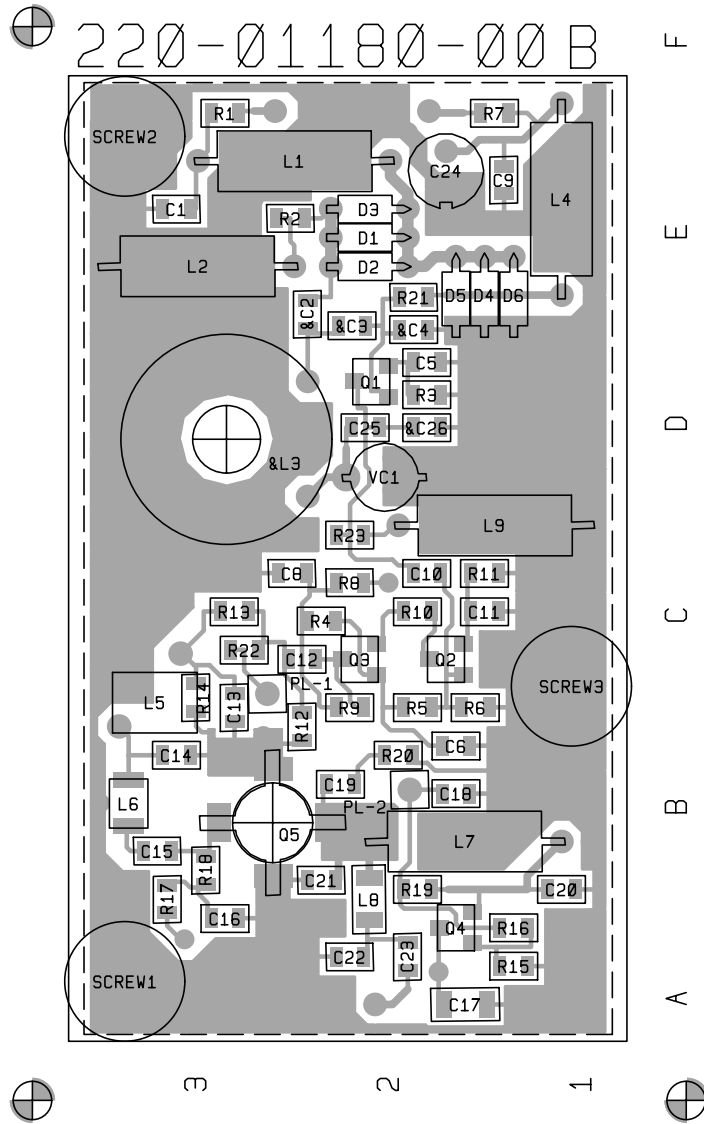
**T820 VCO Mechanical & Miscellaneous Parts (220-01180-00)**

<b>IPN</b>	<b>Description</b>	<b>IPN</b>	<b>Description</b>
220-01180-00	PCB T820 VCO		
240-00025-36	PLUG 32WAY 1ROW PC MTG HARWIN		
345-00040-10	SCREW M3*6MM PAN POZI ST BZ		
345-00060-08	SCREW M5 X 16 CHEESE SLOT PLASTIC T800 TOROID		
350-00016-42	SPACER 5MM HI 8MM X M3 STUD 2.5MM X M3 HOLE		
352-00010-14	NUT M5 HEX PLASTIC T800 TOROID		
353-00010-10	WASHER M3 FLAT 7MM*0.6MM ST BZ		
353-00010-13	WASHER M3 SHAKEPROOF INT BZ		
353-00010-41	WASHER M6 NYLON BULTE LOCK T800 TOROID		





T820 VCO PCB (IPN 220-01180-00) - Bottom Side



T820 VCO PCB (IPN 220-01180-00) - Top Side

